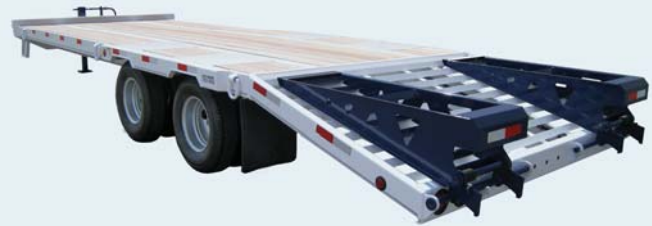


Andersen SUPER DUTY Trailers

ENGINEERED TO LAST



STRENGTH - RELIABILITY - CRAFTSMANSHIP



Bucketwell Beavertail



Pop Up Beavertail



Self Cleaning Beavertail



Slide Out Ramps



Dump Trailer Ramps



Gasoline Powered Hoist

The tough, durable, feature-rich design, high-quality materials, attention to detail and craftsmanship we put into every trailer built, is what makes it an Andersen SUPER DUTY trailer.

Our commitment to offer products and services focused on improving our customers' performance, image, profitability and peace of mind truly makes Andersen the Class of the trailer industry.

Andersen SUPER DUTY Trailers

TAG EQUIPMENT E SERIES



Capacity: 7,500 – 18,000 GVWR
 Deck: 10' - 18' Long x 72", 82" Wide
 Deck Material: Wood, Metal
 Deck Height – 17.5"
 Brakes: All Axles – Elec., Hyd. Opt.
 D-Ring Tie Downs
 Ramps: Arched Perforated Super Grip
 Tool/Chain Box – Tongue Mounted
 LED Lights

TAG TILT SERIES



Capacity: 20,000 – 64,000 GVWR
 Deck: 28' (24' Tilt + 4' Stationary)
 Frame – Pierced Beam
 Crossmembers: 4" Hi-Tensile
 Deck Height – Loaded 36"
 Load Angle 12°
 D-Ring Tie Downs
 Tool/Chain Box – Tongue Mounted
 LED Lights

TAG EQUIPMENT T SERIES



Capacity: 23,000 – 65,000 GVWR
 Decks: 20', 24' + 5' Beavertail
 Frame – Pierced Beam
 Crossmembers: 4" Hi-Tensile
 Deck Height – Loaded 33"
 Load Angle 15°
 D-Ring Tie Downs
 Tool/Chain Box – Tongue Mounted
 LED Lights

DUMP



Capacity: 7,000, 10,000, 12,000 GVWR
 Dump Body 60" x 119" or 77" x 143"
 Deck Height: 24"
 Brakes: All Axles – Elec., Hyd. Opt.
 Scissors Hoist: Electric Std., Gas Opt.
 Body: One Piece Formed Sides
 Frame: Boxed Formed Channel
 LED Lights
 Powder Coated Finish

UTILITY BOX SERIES



Capacity: 2,990 – 7,500 GVWR
 Box 60" x 120" or 72" x 144"
 Deck Height: 13"
 Brakes: None, Opt. Elec. or Hyd.
 One Piece Formed Sides
 Boxed Channel Frame
 D-Ring & Rope Hook Tie Downs
 LED Lights
 Powder Coated Finish

GOOSENECK



Capacity: 20,000 – 25,900 GVWR
 Decks: 20' – 36' + 5' Beavertail
 Frame – Pierced Beam
 Crossmembers: 4" Hi-Tensile
 Deck Height – Loaded 33"
 Load Angle 15°
 D-Ring Tie Downs
 Optional Gooseneck Tool Box
 LED Lights

UTILITY TILT SERIES



Capacity: 9,990 – 15,000 GVWR
 Deck 16' – 20' (16' Tilt + 4' Stationary)
 Frame – Structural Channel
 Crossmembers: 4" Hi-Tensile
 Deck Height – Loaded 22"
 Load Angle 10°
 D-Ring Tie Downs
 Tool/Chain Box – Tongue Mounted
 LED Lights

PAN SERIES



Capacity: 9,990 GVWR
 Deck: 16'L x 80"W x 4"H
 Frame – Structural & Formed Channel
 Floor/Sides – Formed Sheet
 Deck Height – 17"
 Brakes: All Axles – Elec., Hyd. Opt.
 Ramps – 76" Long x 16" Wide
 D-Ring Tie Downs
 LED Lights

SLIDING AXLE ROLL BACK



Capacity: 7,500 GVWR
 Deck: 18'L x 80"W (84" between fenders)
 Frame – Rectangle Tube
 Deck Height – 21"
 Deck to Top of Fender – 7"
 Brakes: All Axles – Elec., Hyd. Opt.
 D-Ring Tie Downs
 LED Lights

Andersen SUPER DUTY trailers have been designed and built for those who operate in tough, demanding conditions and want long-lasting, well-built equipment that looks as good as it works. They're designed and engineered with many standard features to increase performance and profitability by making them easier to use, more productive, and longer lasting. They're built and finished with craftsmanship that's sure to improve your image.